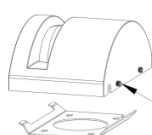
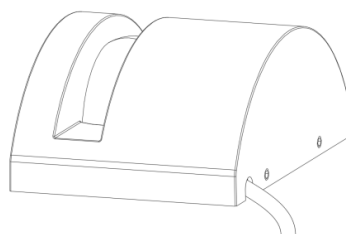


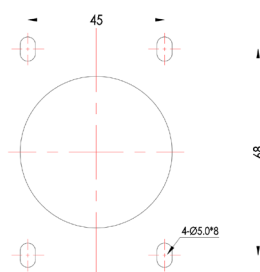
# WIND USER MANUAL



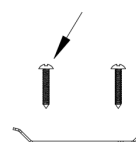
1. The luminaire shall be installed by a qualified electrician and wired in accordance with the latest IEE electrical regulations or the national requirements.
2. No supplied water-proof box, installation should be advised by qualified professional.
3. The external flexible cable can not be replaced. If the cable is damaged, the luminaire should be discarded.



M5 include screw



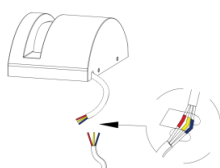
wooden screw



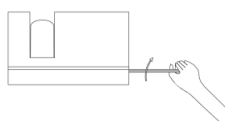
1. Loosen the M5 screws and remove the lamp support.

2. Drill four holes on the wall or floor according to the hole position of support, and put rubber plugs or wood blocks into the holes.

3. Fix the lamp support with M4\*25 screws.



4. Connect power cord to the power cable of the lamps, and then tie it with waterproof tape (waterproof measures must be taken).



5. Put the long cable in place, align the installation card of the lamp with the position of the support, and lock the screws.